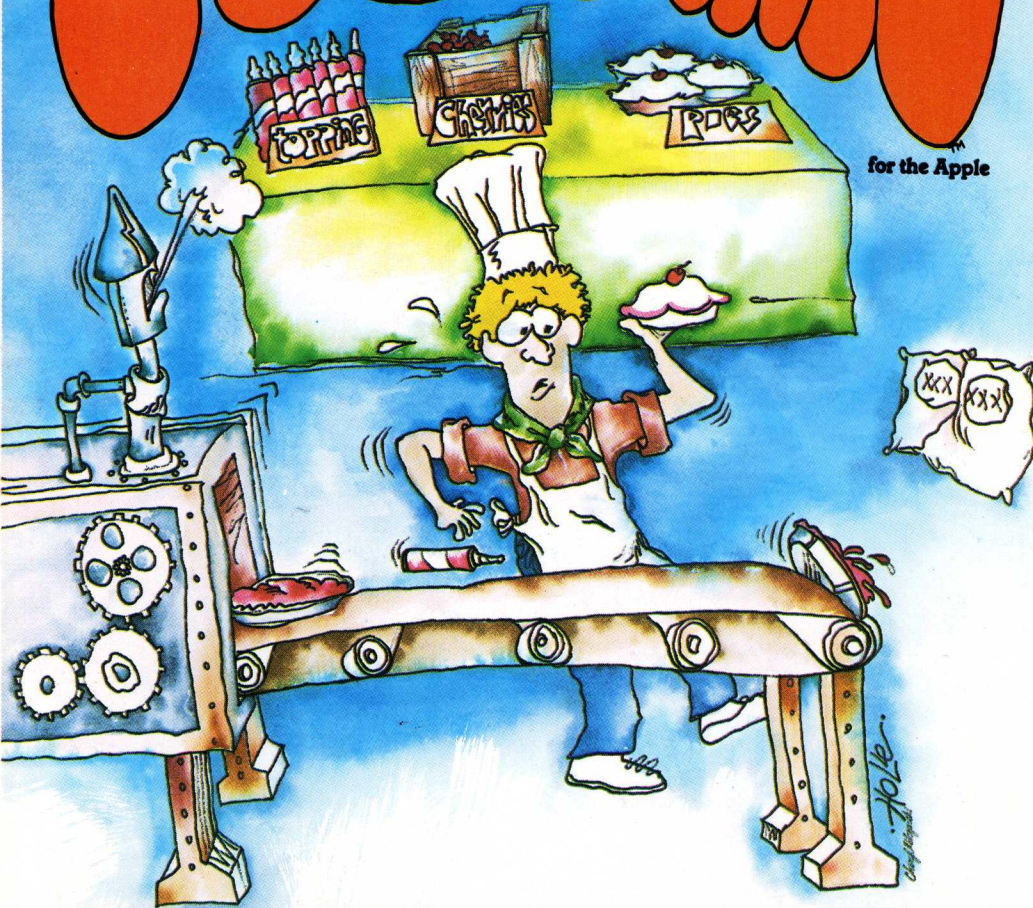


PIE MAN

for the Apple



by Eagle Berns and Michael Kosaka



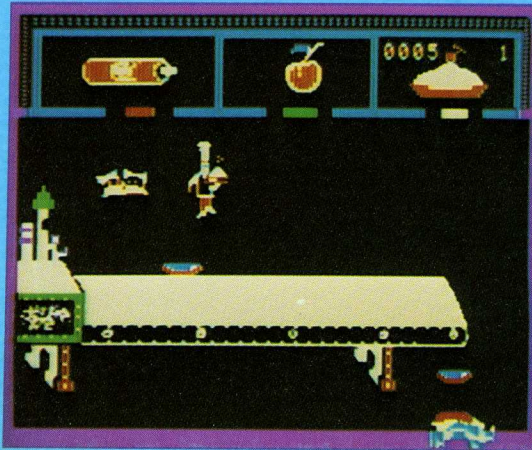
penguin software
the graphics people

Graphics created with The Graphics Magician™

Get Apple
EN24
\$29.95

You got a late start looking for that summer job, and all you could find was a baker apprentice position at the Automated Bakery Company. Simple enough, since the pies are made by machine...all you have to do is add topping and put the pies away when they come out on the conveyor belt. Shouldn't be too difficult of a summer, you think to yourself...

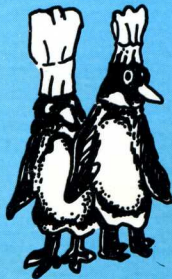
**Apple version requires 48K and one disk drive.
PIE MAN can be played with Apple joystick, Atari joystick, or keyboard.**



Actual scene from PIE • MAN

Other products from Penguin Software:

**Spy's Demise
Transylvania
Thunderbombs
Crime Wave
The Graphics Magician
The Complete Graphics System II
Special Effects**



TM
**penguin
software**
the graphics people

830 4th Avenue
Geneva, IL 60134
(312) 232-1984

Copyright 1982, Penguin Software, Inc. Apple is a trademark of Apple Computer, Inc. Atari is a trademark of Atari, Inc. Penguins hatch their eggs on top of their feet.

How to Play:

As pies come out on the conveyor, you must run up to the whipped cream bin, get a can of whipped cream, squirt it on the pie, go to the cherry bin, take a cherry, put it on the pie, then take the finished pie and put it in the pie bin. Watch out for flour sacks and grease spots on the floor, or the slightly tipsy wedding-cake baker delivering his creations. Oh, yes . . . if you let 7 pies fall to the floor, you'll be fired.

PIE MAN's hand must be directly under the bin dispenser to pick up the whipped cream or cherries and to put away the pies. When pies are on the conveyor, PIE MAN's hand must be directly over the pie to put on the whipped cream or cherries and to pick up the finished pie.

Controls:**JOYSTICK**

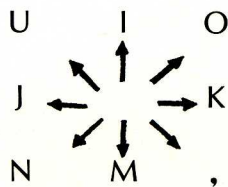
The joystick controls your movement. Either button lets you take things or put them down (whipped cream onto the pie, for example), depending on where you are. If you find yourself carrying the wrong thing, hitting any key on the keyboard lets you drop what you are holding.

ATARI JOYSTICK (with Joyport, or similar interface)

The joystick controls your movement, and the button lets you take things or set them down, depending on where you are. To drop something, press any key on the keyboard.

KEYBOARD

Movement is controlled with the following directional keys. Note that they are arranged in the same pattern on the keyboard.



To stop moving, press the SPACE bar.

To pick up, set, or drop things, use the following keys:

Pick up: A (access)

Set down: S (set)

Drop: D (drop)

If your PIE MAN disk should fail after 60 days from purchase, return it with \$5 to Penguin Software for replacement. We feel this is a fair replacement policy, in line with our policy of not copy-protecting our applications software. Please help us by not copying our products for other than your own use.



Remember, only you can
prevent software piracy.

Joyport is a trademark of Sirius Software, Inc.